

# National Swine Flu Surveillance Program

The Netherlands, 2022-2023

Erhard van der Vries, PhD



# A sustainable One Health initiative



National Institute for Public Health  
and the Environment  
*Ministry of Health, Welfare and Sport*

# Swine influenza surveillance in the Netherlands

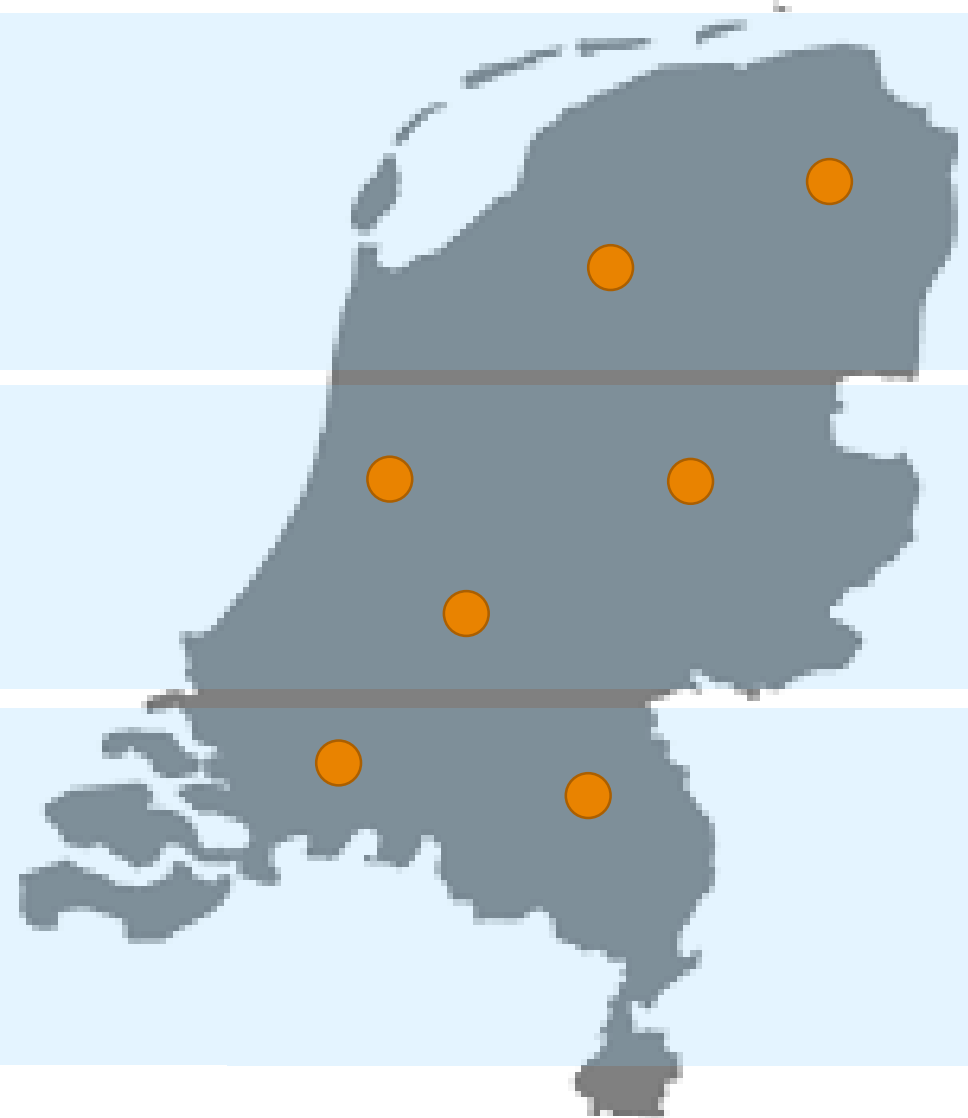


522 swabs

11 (30%)

7 (19%)

19 (51%)



# H1 lineages



1A.3.3.2-like

Classical Swine

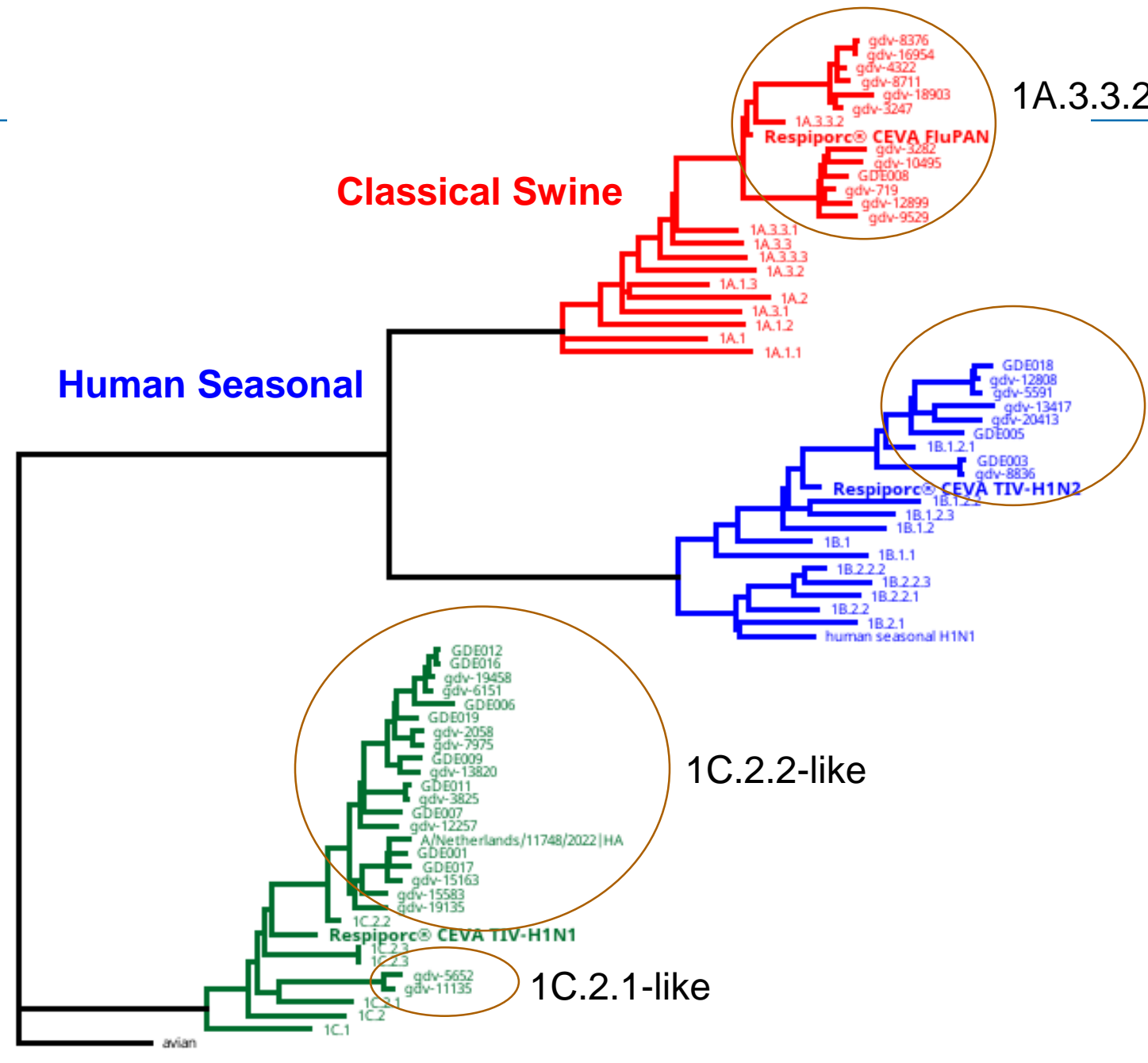
Human Seasonal

1B.1.2.1-like

1C.2.2-like

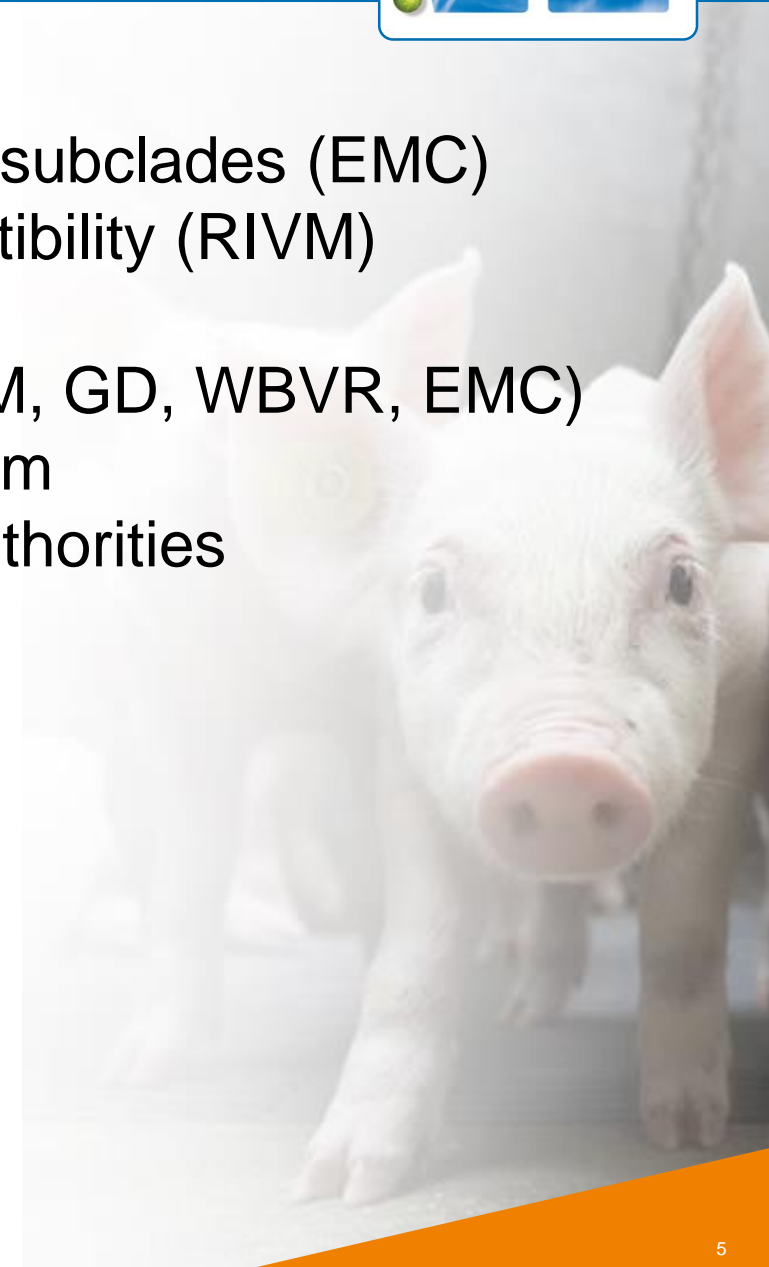
Eurasian-Avian

1C.2.1-like



0.1

1. Generating reference sera representing all Dutch H1 subclades (EMC)
2. Establishing baseline values for antiviral drug susceptibility (RIVM)
3. Study incidence of virus reassortment events
4. Evaluating ring trial influenza WGS sequencing (RIVM, GD, WBVR, EMC)
5. Launching national swine influenza monitoring platform
6. Report to national (VWS) and international (WHO) authorities



# Selection of viruses for HI testing

